



ENDURANCE[®] TSD *TRANSIT SERVICE DRIVE*

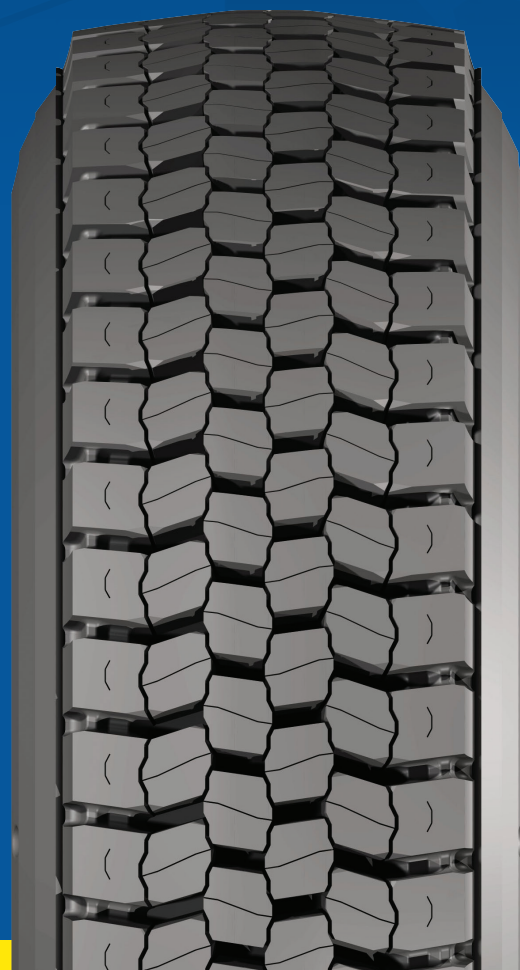
GOODYEAR'S BEST URBAN TRANSIT DRIVE TIRE FOR LONG MILES TO REMOVAL AND TRACTION

- **DELIVERS COST PER MILE**
Innovative tread compound helps deliver long miles to removal in demanding drive applications
- **A FIRM GRIP**
Open shoulder tread design meets 3PMSF performance requirements, helping provide traction in all conditions
- **HEFTY REINFORCEMENT**
Enhanced casing with steel belt package helps offer toughness and outstanding performance through multiple retread cycles
- **CONSISTENCY IS KEY**
Mirrored, non-directional tread design offers footprint uniformity and even wear
- **ARM-IN-ARM TOUGHNESS**
Tie-bar shoulder and bladed tread pattern help deliver long, even wear



Three-Peak Mountain
Snowflake (3PMSF)

GOODYEAR
MORE DRIVEN.



*Meets Three-Peak Mountain Snowflake (3PMSF) Traction Requirements.



ENDURANCE® TSD AVAILABLE SIZES AND LOAD RANGES

| TIRE SIZE | LOAD RANGE | SINGLE LOAD | | SINGLE INFLATION | | DUAL LOAD | | DUAL INFLATION | | WEIGHT | | RIM WIDTH | | OVERALL WIDTH | | OVERALL DIAMETER | | STATIC RADIUS | | RPM | RPK | TREAD DEPTH | MIN. DUAL SPACING | | SPEED RATING |
|--|------------|-------------|-------|------------------|-----|-----------|-------|----------------|-----|--------|------|-----------|------|---------------|------|------------------|------|---------------|-----|-----|-----|-------------|-------------------|----|--------------|
| | | LBS | KG | PSI | KPA | LBS | KG | PSI | KPA | LBS | KG | IN | MM | IN | MM | IN | MM | IN | MM | | | 32NDS | IN | MM | |
| TUBELESS TIRES ON 15" DROP CENTER RIMS | | | | | | | | | | | | | | | | | | | | | | | | | |
| 305/70R22.5 | L | 7,830 | 3,550 | 130 | 900 | 7,390 | 3,750 | 130 | 900 | 131.5 | 59.7 | 9.0 | 12.1 | 307 | 40.2 | 1,021 | 18.7 | 475 | 519 | 321 | 28 | 13.5 | 343 | 68 | |
| 315/80R22.5 | L | 9,090 | 4,125 | 130 | 900 | 8,270 | 3,750 | 130 | 900 | 131.5 | 59.7 | 9.0 | 12.6 | 320 | 43.1 | 1,095 | 20.1 | 511 | 484 | 299 | 26 | 13.8 | 351 | 75 | |

Check goodyeartrucktires.com for updated data.

Complementary Products

STEER/ALL-POSITION

Metro Miler G652 RTB™
Marathon LHS II + HL

Competitive Replacements

Michelin X INCITY Grip D Firestone FD600

Recommended Applications



Three-Peak Mountain Snowflake (3PMSF)

To find out more about Goodyear transit tires that can go the distance, visit goodyeartrucktires.com.

TOTAL MOBILITY™



Trusted Products

Full range of tires, technologies and retreads with options for every fleet.



Premier Service Network

Reliable service network of 2,300+ dealer locations nationwide.



Tire Management

Unparalleled programs and tools to optimize tire assets and ROI.

goodyeartrucktires.com

WARNING: with respect to the use of all Goodyear bus mileage tires, any use other than as imprinted on the tires is unsafe. Improper use could render the tire unserviceable and could jeopardize the lives and safety of operators and passengers. Goodyear assumes no responsibility for any accident, injury or damage caused by special mileage tire failures due to misuse or the failure to follow proper maintenance and installation procedures.

NOTE: Federal Motor Carrier Safety Administration (FMCSA), Regulatory Guidance for the Federal Motor Carrier Safety Regulations, Part 393.75(d): "No bus shall be operated with regrooved, recapped or retreaded tires on the front wheels." Other requirements apply, including federal and manufacturer standards.

*Meets Three-Peak Mountain Snowflake (3PMSF) Traction Requirements.